



SES COLLEGE SREEKANDAPURAM

(Accredited by NAAC with 'B' Grade) Affiliated to Kannur University



Criterion 4

Infrastructure and Learning Resources

4.1 Physical Facilities

4.1.3 Percentage of classrooms and seminar halls with ICT- enabled facilities such as smart class, LMS, etc.



SES COLLEGE

SREEKANDAPURAM
EDUCATIONAL
SOCIETY

Affiliated to Kannur University
Accredited by NAAC at 'B' Grade

SREEKANDAPURAM POST,
KANNUR DISTRICT,
KERALA, PIN:670631
PH: 0460 2230293, 2231145



S.E.S. COLLEGE

www.sescollege.ac.in • sescollege.skprm@gmail.com • principal.sescollege@gmail.com

Details of class rooms and Seminar Hall

Total number of class rooms and Seminar hall : 46

Web link of Geotagged Photographs of class rooms and Seminar hall

[-http://www.sescollege.ac.in/iqac/physical-and-academic-facilities](http://www.sescollege.ac.in/iqac/physical-and-academic-facilities)

CLASSROOM SPECIFICATIONS (AIDED)

A Block

Sl No.	Room Number	Room Name	Area (Meter Square)	Purpose
1	A2	I DC English	96.05	Class room for teaching and learning
2	A13	I DC Chemistry	52.85	Class room for teaching and learning
3	A14	II DC B.Com	52.85	Class room for teaching and learning
4	A15	I DC BBA	52.85	Class room for teaching and learning
5	A16	II DC BBA	52.85	Class room for teaching and learning
6	A18	II DC BA Economics	52.13	ICT enabled class room to improve learning
7	A19	I DC BA Economics	50.94	Class room for teaching and learning
8	A20	III DC BA Economics	50.77	ICT enabled class room to improve learning
9	A22	II DC BA English	32.6	ICT enabled class room to improve learning
10	A23	III DC BA English	52.85	ICT enabled class room to improve learning

11	A24	Smart Room	156.31	ICT enabled room with recording facilities
12	A25	I PG M A Journalism	51.78	Class room for teaching and learning
13	A26	II PG M A Journalism	53.05	ICT enabled class room to improve learning
14	A27	III DC B.Com	52.85	ICT enabled class room to improve learning


B Block

Sl No.	Room Number	Room Name	Area (Meter Square)	Purpose
15	B3	III DC BBA	75.89	ICT enabled class room to improve learning
16	B4	III DC B.Sc Mathematics	39.35	ICT enabled class room to improve learning
17	B5	II DC B.Sc Physics	39.35	ICT enabled class room to improve learning
18	B7	I DC B.Com	75.89	Classroom for teaching and learning
19	B11	III DC B.Sc Chemistry	50.64	ICT enabled class room to improve learning
20	B14	Seminar Hall		Seminar hall used for various purposes like guest lectures,workshops,exhibitions etc.
21	B18	I DC B.SC Mathematics	79.55	Class room for teaching and learning
22	B19	II DC B.Sc Mathematics	77.4	Class room for teaching and learning
23	B21	III DC B.Sc Physics	54.68	Class room for teaching and learning
24	B22	II DC B.Sc Chemistry	55.5	Class room for teaching and learning
25	B23	I DC B.Sc Physics	79.65	Class room for teaching and learning

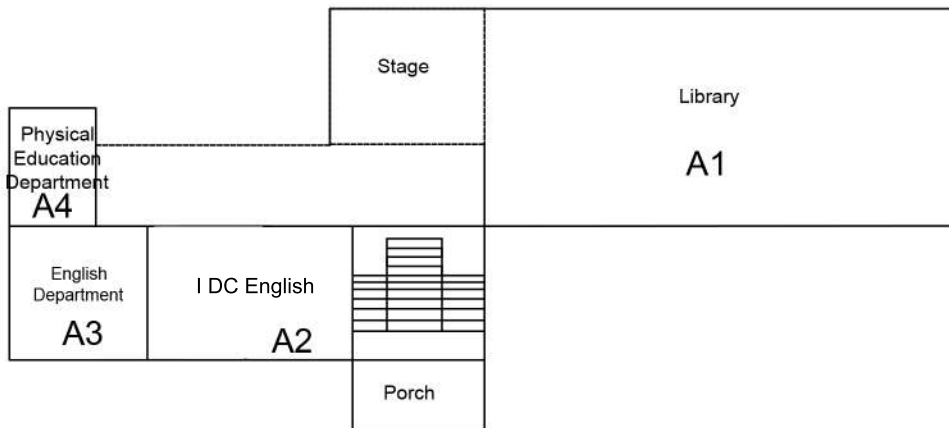
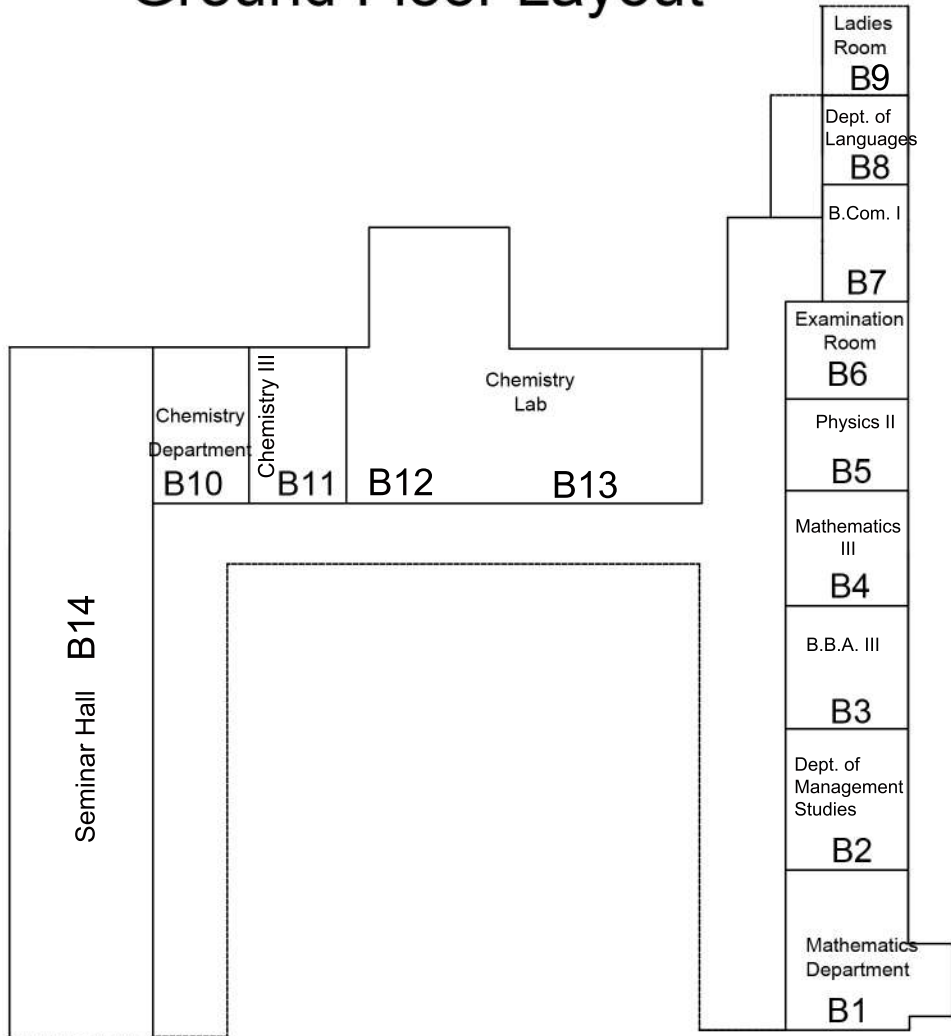
CLASSROOM SPECIFICATIONS (UNAIDED)

Sl.No	Room No	Name of the Department	Area	Purpose
26	3	B.Com Comp.Application I	63 M2	Class room for teaching and learning
27	4	B.Com Comp.Application II	63 M2	Class room for teaching and learning
28	5	B.Com Comp.Application III	63 m2	Class room for teaching and learning
29	6	Audio Visual Room	63m2	Classroom for teaching and learning
30	7	M.Com Finance I	63 M2	ICT enabled class room to improve learning
31	8	M.Com Finance II	61.2 M2	ICT enabled class room to improve learning
32	9	B.C.A III	62.1 M2	Class room for teaching and learning
33	10	B.C.A II	63 M2	Class room for teaching and learning
34	12	M.Sc C.S II	31.5 M2	Class room for teaching and learning
35	13	M.Sc C.S I	31.5 M2	Class room for teaching and learning
36	14	B.Sc C.S I	30.15 M2	Class room for teaching and learning
37	15	B.Sc C.S II	32.4 M2	Class room for teaching and learning
38	16	B.C.A I	63 m2	Class room for teaching and learning
39	19	M.Com I B I	31.5m2	Class room for teaching and learning
40	20	M.Com I B II	30.6m2	Class room for teaching and learning
41	24	B.Sc C.S III	50.5m2	Class room for teaching and learning
42	25	M.A English II	50.5m2	Class room for teaching and learning
43	26	M.A English I	48.2m2	Class room for teaching and learning
44	27	B.A English III	48.2m2	Class room for teaching and learning
45	28	B.A English II	49.1m2	Class room for teaching and learning
46	29	B.A English I	49.1 m2	Class room for teaching and learning

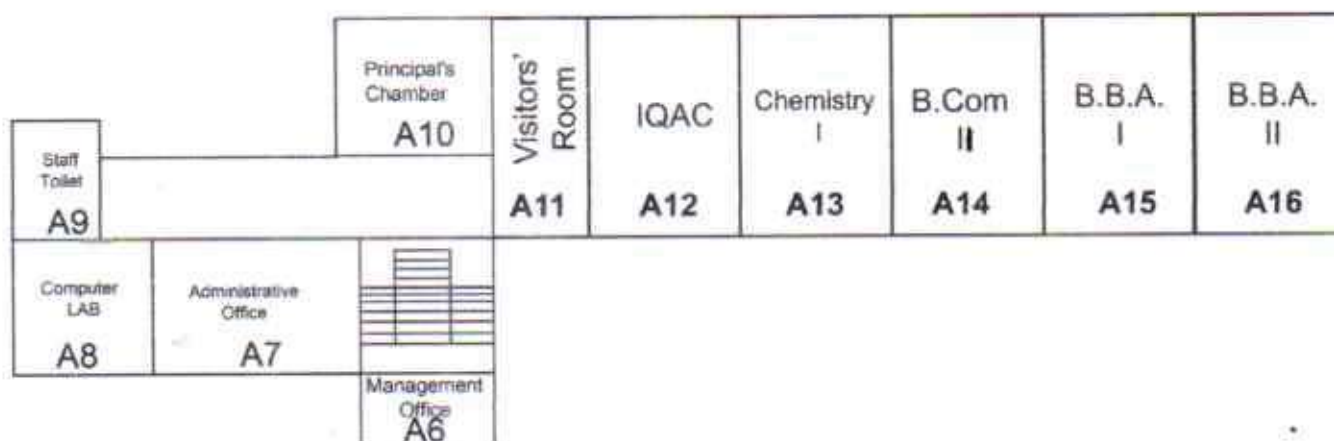
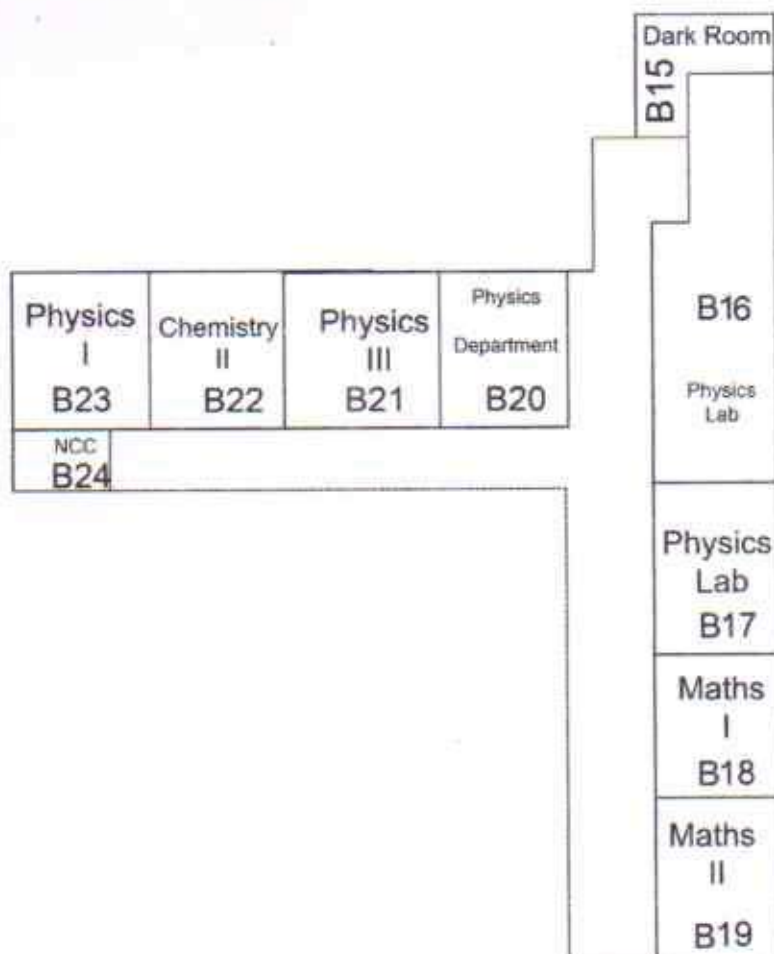



 Dr. DOMINIC THOMAS
 Principal
 S.E.S. COLLEGE
 SREEKANDAPURAM

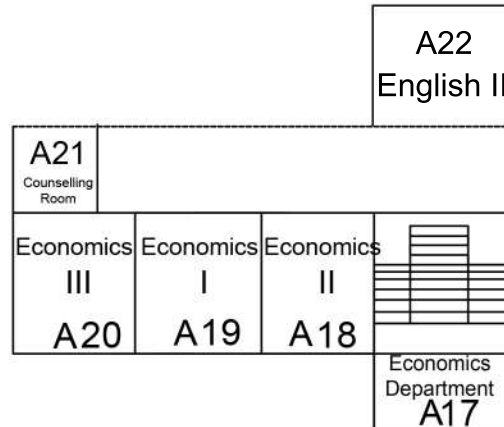
Ground Floor Layout



First Floor Layout



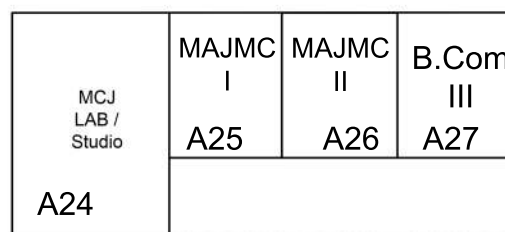
Second Floor Layout



Third Floor Layout



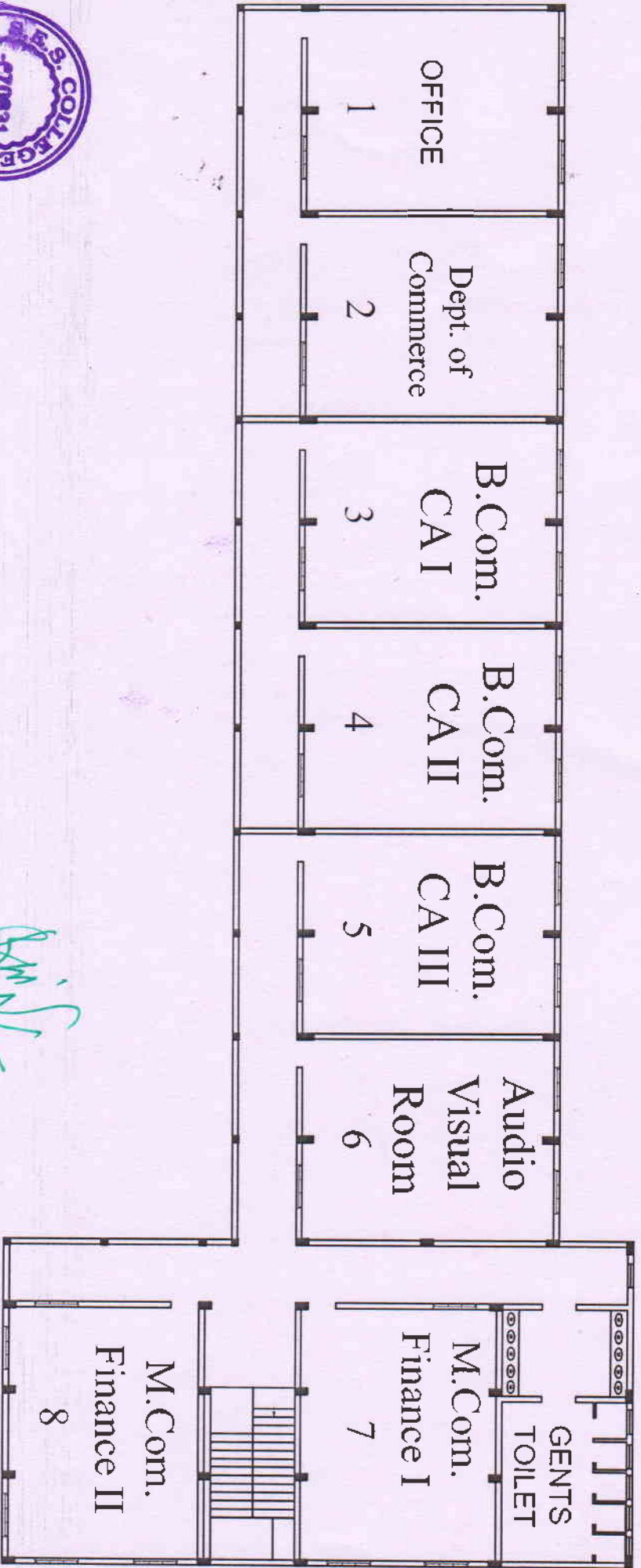
Cellar Floor Layout



S E S COLLEGE, (Unaided) Sreekanthapuram

Building Layout

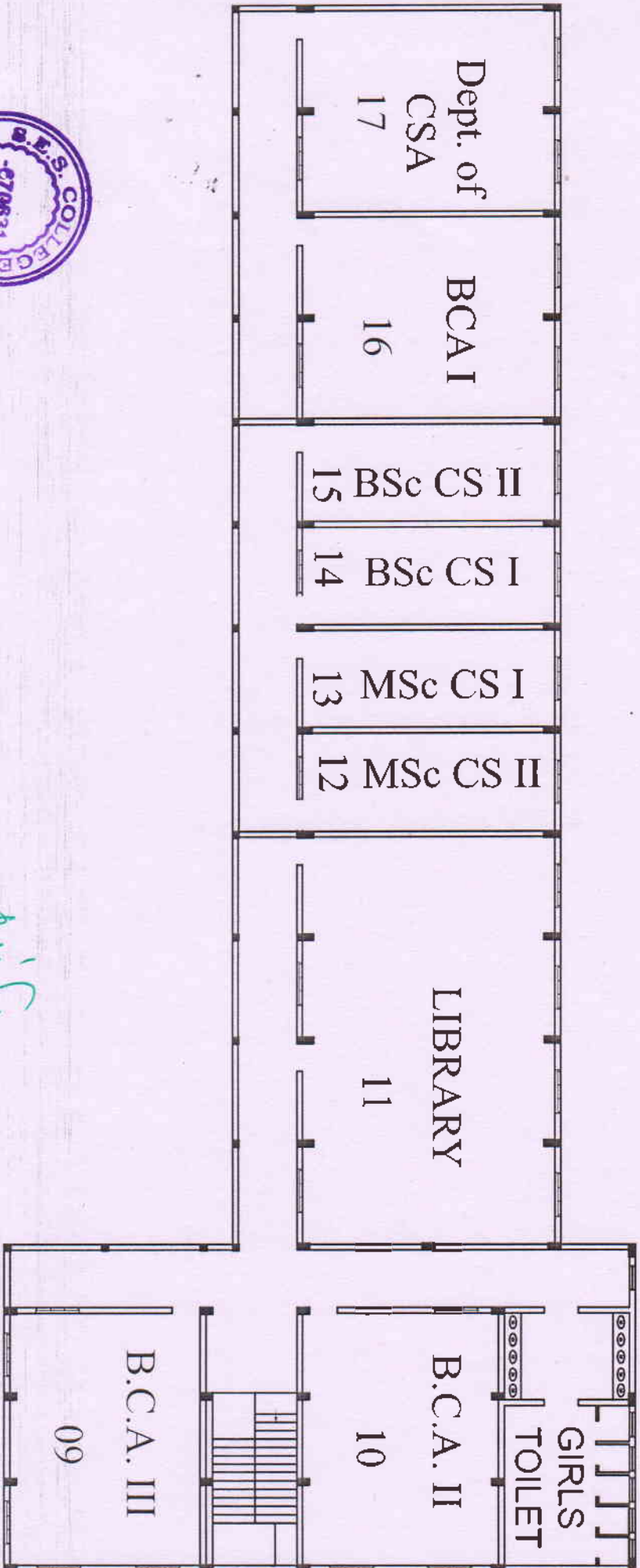
Ground Floor



Signature

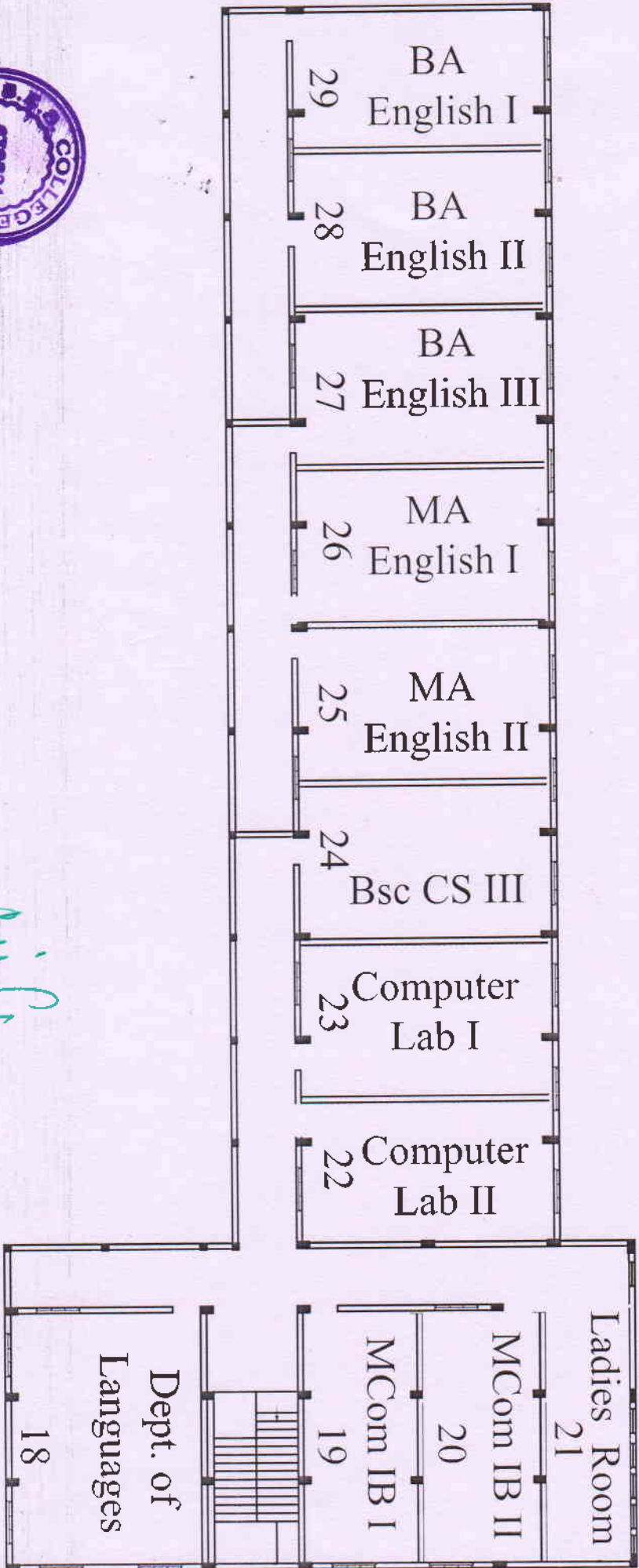
PRINCIPAL
S.E.S. COLLEGE
SREEKANTHAPURAM

First Floor



[Signature]
PRINCIPAL
S.E.S. COLLEGE
SREEKANANTHAPURAM

Second Floor



[Signature]
PRINCIPAL
S.E.S. COLLEGE
SREEKANTHAPURAM